



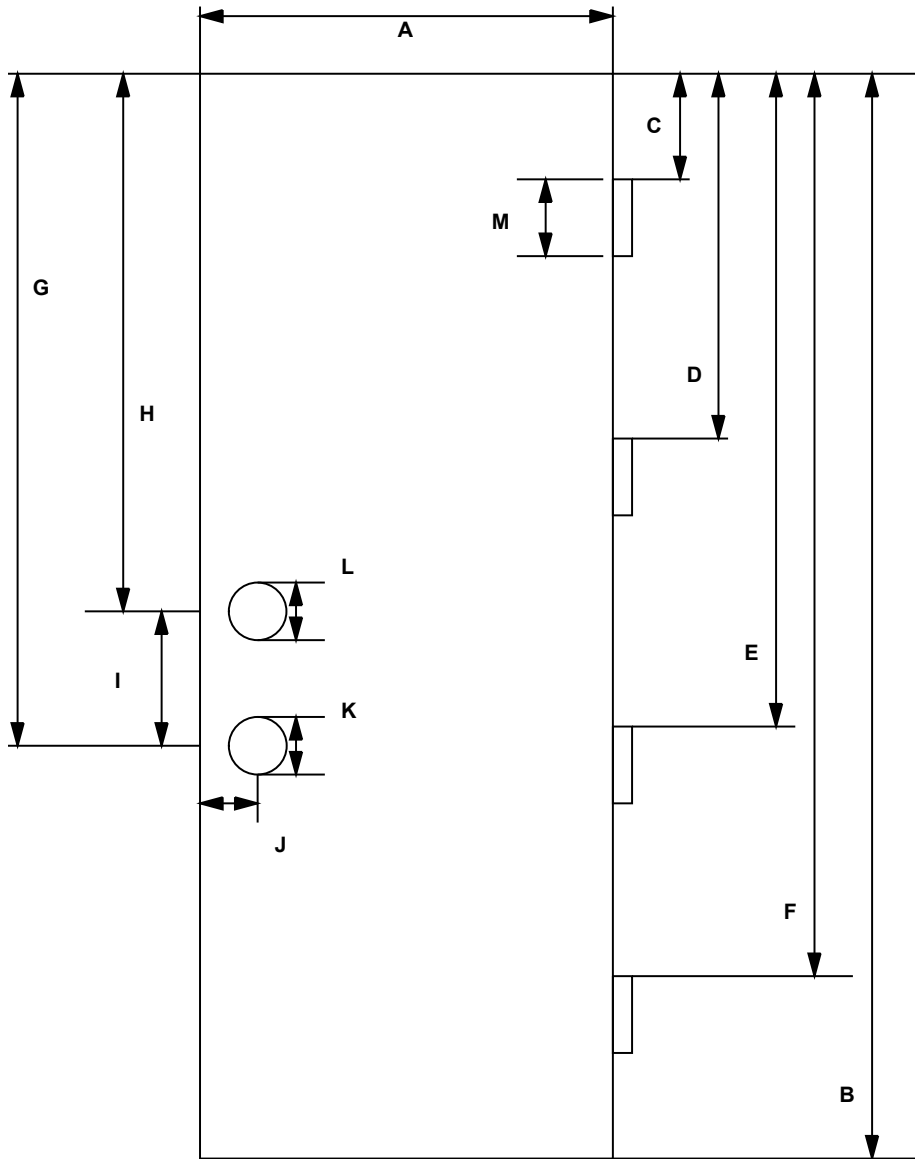
3243 RIPPEY ROAD, LOOMIS, CA  
 916-652-4655  
 FAX 916-652-3860

Customer : \_\_\_\_\_

Job : \_\_\_\_\_

Phone # : \_\_\_\_\_

# DOOR MATCH UP SHEET



- A: \_\_\_\_\_ Actual Door Width (on the hinge side)
- B: \_\_\_\_\_ Actual Door Height
- C: \_\_\_\_\_ Top of Door to 1st hinge
- D: \_\_\_\_\_ Top of Door to 2nd hinge
- E: \_\_\_\_\_ Top of Door to 3rd hinge
- F: \_\_\_\_\_ Top of Door to 4th hinge
- G: \_\_\_\_\_ Top of Door to C/L of bore
- H: \_\_\_\_\_ Top of Door to C/L of dead bolt bore.
- I: \_\_\_\_\_ Center of lock bore to center of dead bolt bore.
- J: \_\_\_\_\_ Backset - edge of Door to center of dead bolt bore.
- K: \_\_\_\_\_ Diameter of bore
- L: \_\_\_\_\_ Diameter of Dead Bolt bore
- M: \_\_\_\_\_ Hinge size  
 5/8 radius or 1/4 radius  
 Thickness of door  
 1-3/8" or 1-3/4"
- \_\_\_\_\_ Door style  
 Solid Core or Hollow Core

